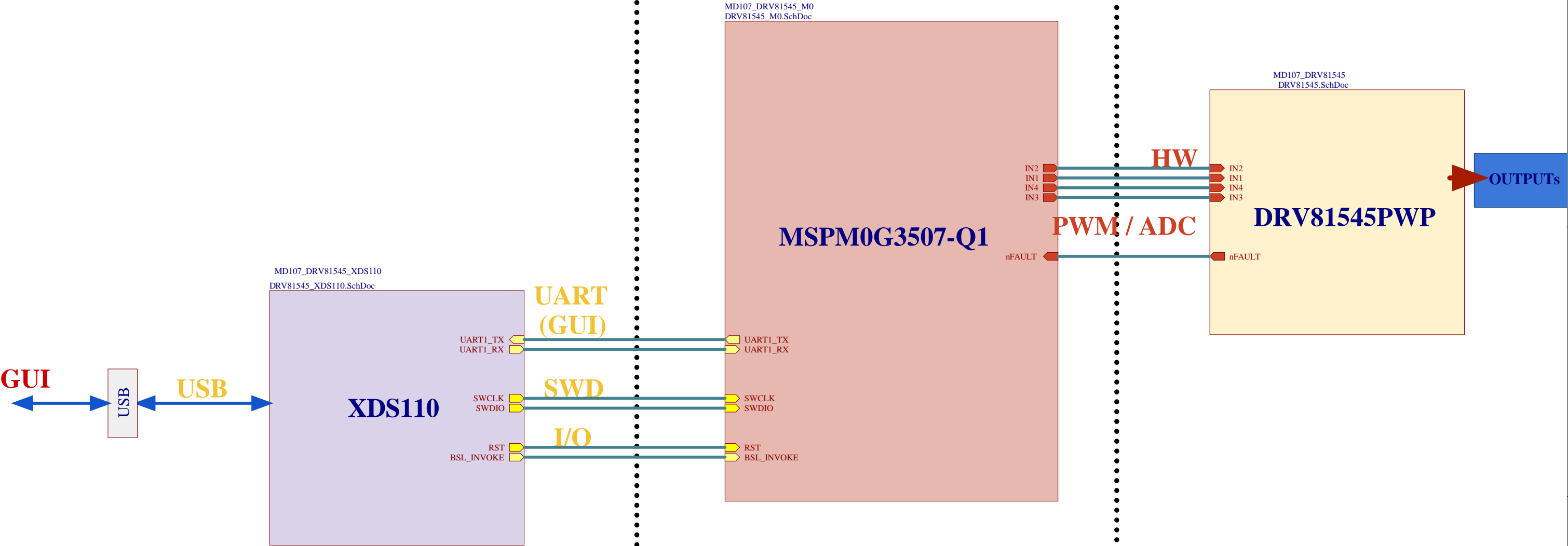


DRV81545 TOP LEVEL SCHEMATIC

INTERFACE/DEBUGGING

PROCESSING

DRIVER + OUTPUTS

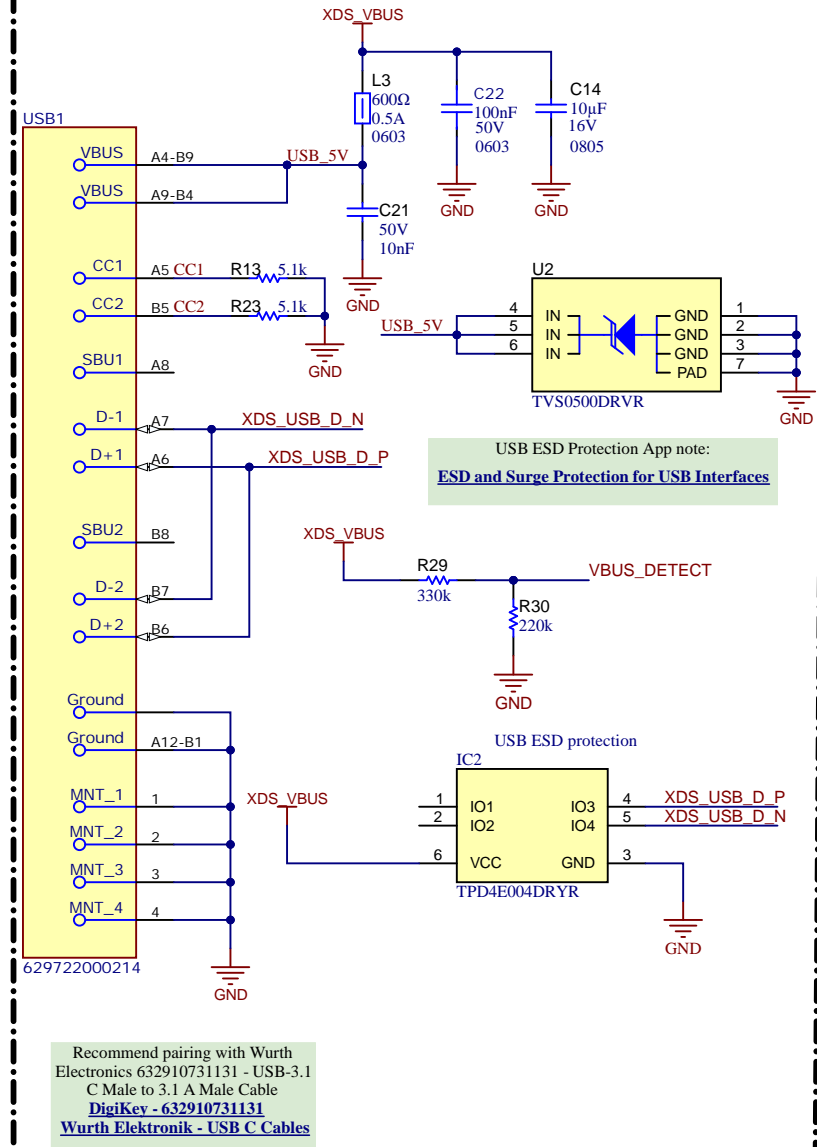


MD107_DRV81545_Hardware
DRV81545_Hardware.SchDoc

Texas Instruments and/or its licensors do not warrant the accuracy or completeness of this specification or any information contained therein. Texas Instruments and/or its licensors do not warrant that this design will meet the specifications, will be suitable for your application or fit for any particular purpose, or will operate in an implementation. Texas Instruments and/or its licensors do not warrant that the design is production worthy. You should completely validate and test your design implementation to confirm the system functionality for your application.

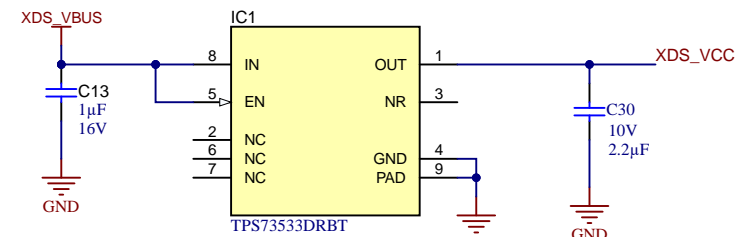
Orderable: DRV81545EVM	Designed for: Public Release	Mod. Date: 5/19/2025
TID #: N/A	Project Title: DRV81545	
Number: MD107-001	Rev: A	Sheet Title: TOP LEVEL SCHEMATIC
SVN Rev: Not in version control	Assembly Variant: DRV81545PWP	Sheet: 0 of 5
Drawn By: Mojtaba Afshar	File: DRV81545_Top_Level.SchDoc	Size: B
Engineer: Mojtaba Afshar	Contact: http://www.ti.com/support	

USB-C Interface, ESD Protection

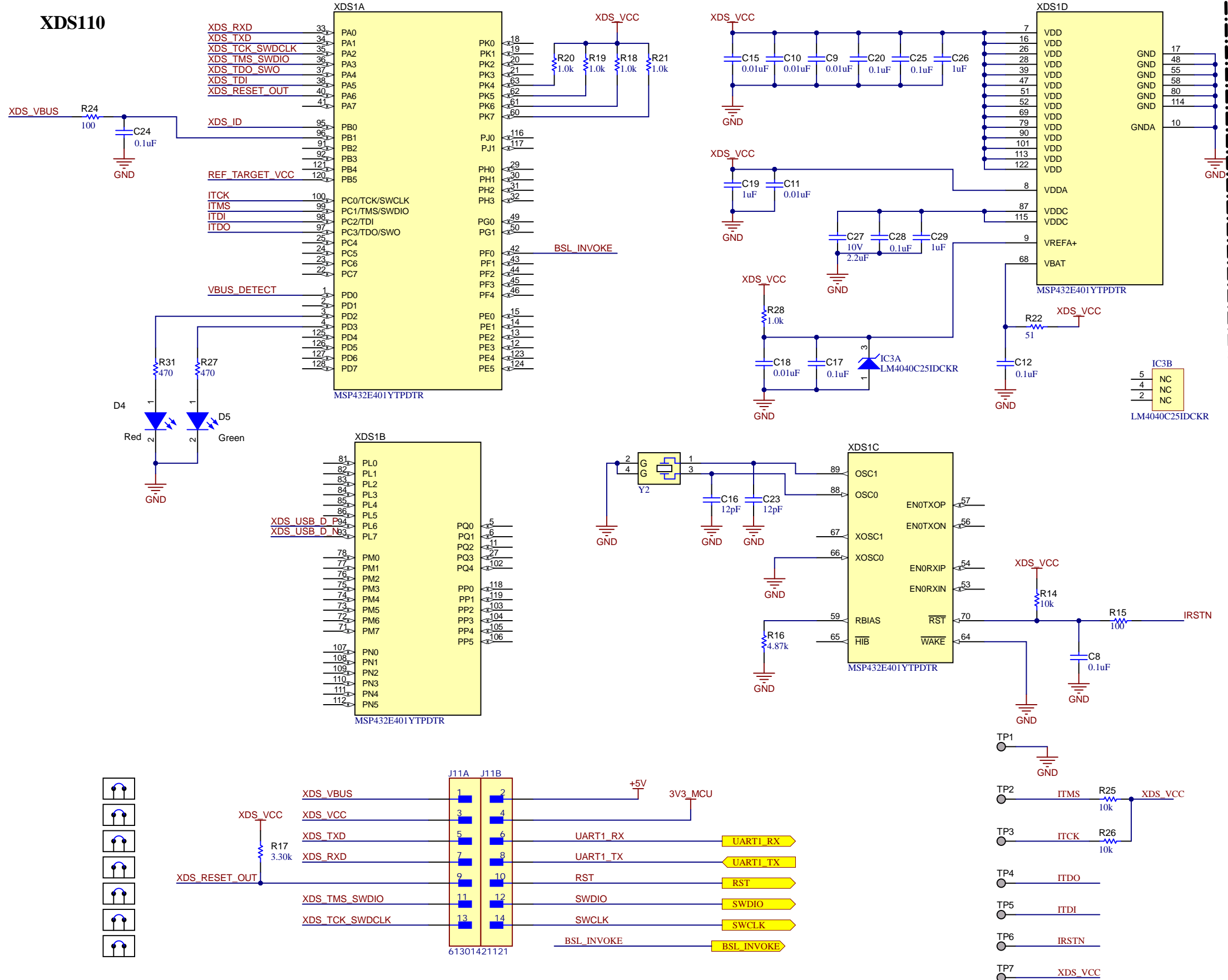


3.3V LDO

LDO 3v3 (for XDS)

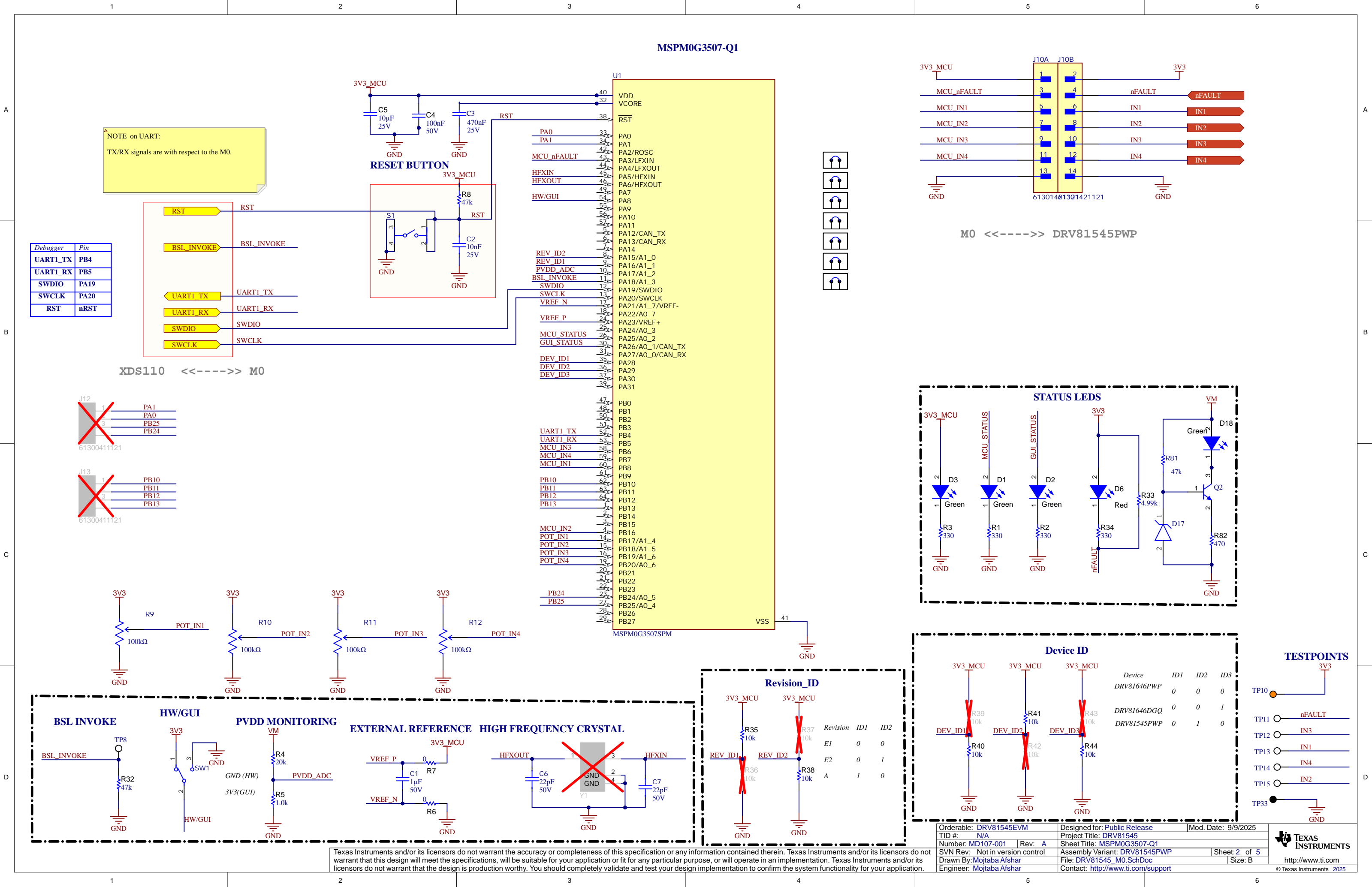


XDS110



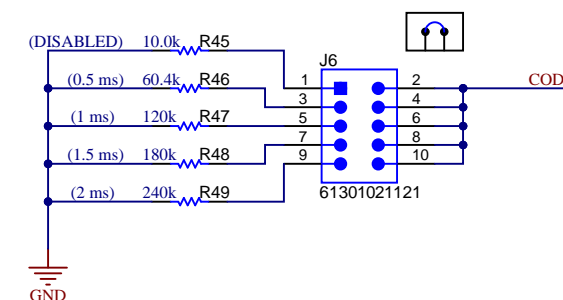
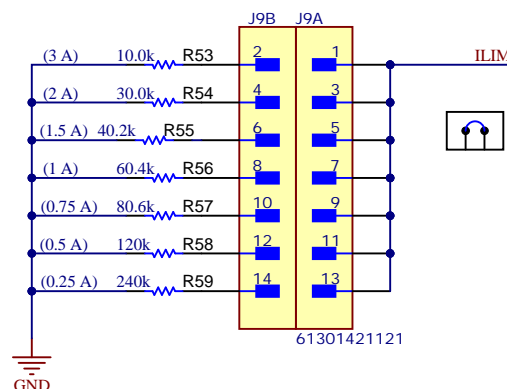
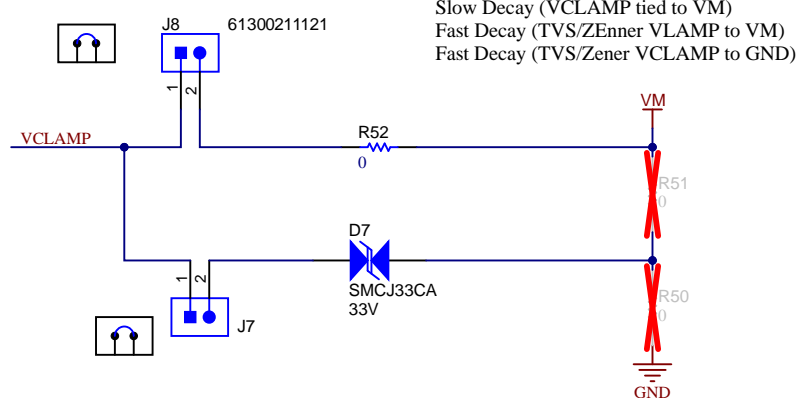
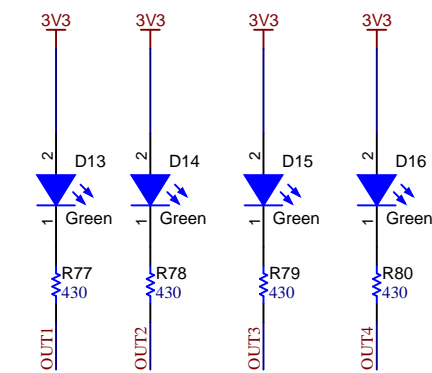
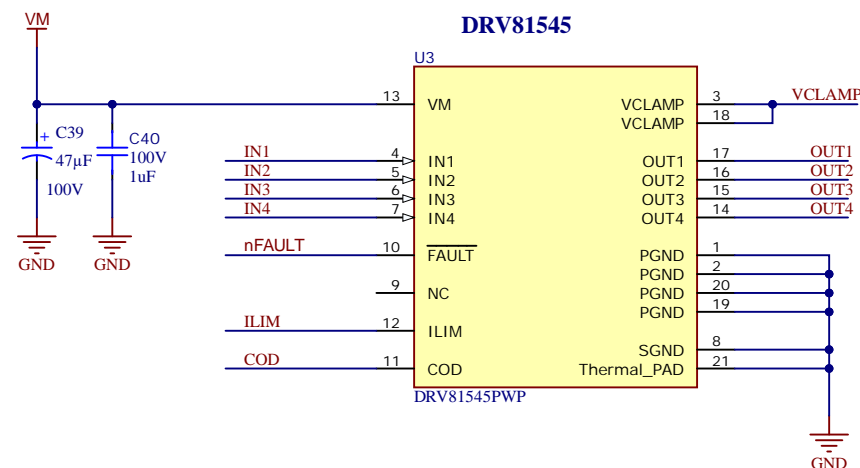
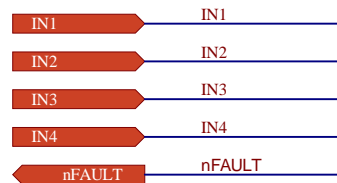
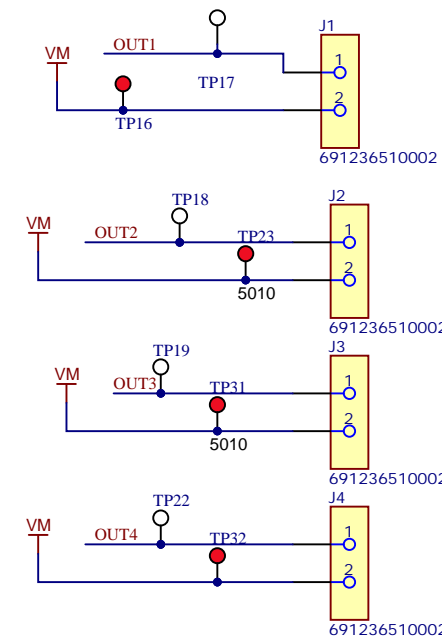
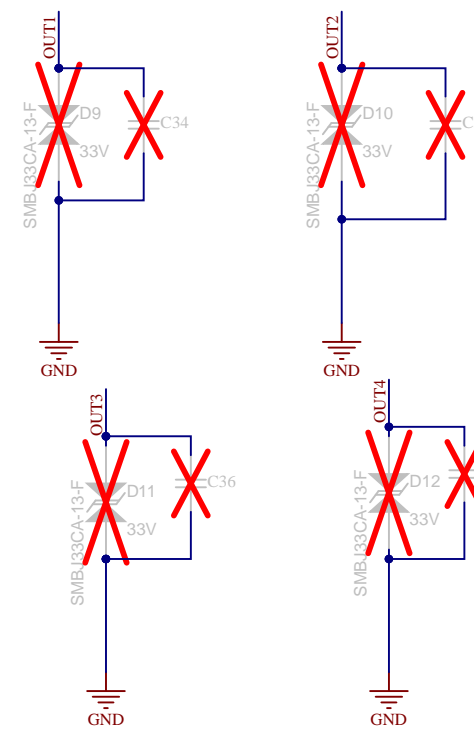
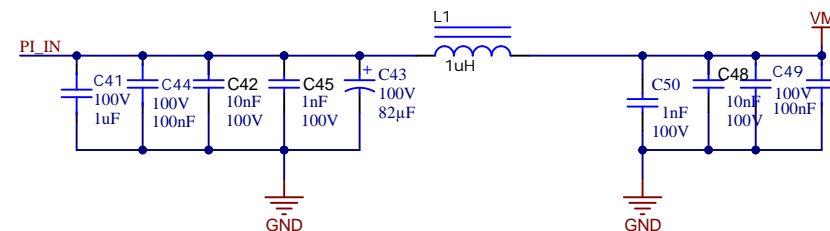
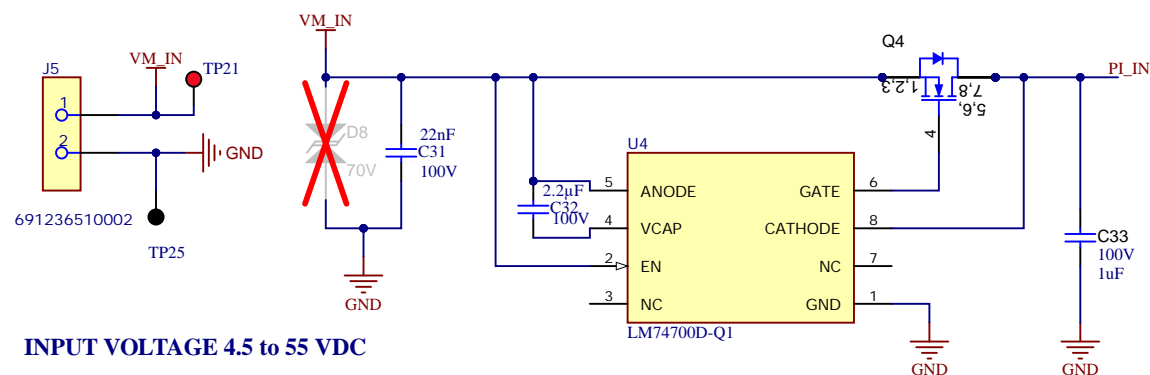
XDS110 <-----> LaunchPad

Orderable: DRV8154SEVM	Designed for: Public Release	Mod. Date: 9/9/2025
TID #: N/A	Project Title: DRV81545	
Number: MD107-001	Rev: A	Sheet Title: XDS110
SVN Rev: Not in version control	Assembly Variant: DRV81545PWP	Sheet: 1 of 5
Drawn By: Mojtaba Afshar	File: DRV81545_XDS110.SchDoc	Size: B
Engineer: Mojtaba Afshar	Contact: http://www.ti.com/support	



Texas Instruments and/or its licensors do not warrant the accuracy or completeness of this specification or any information contained therein. Texas Instruments and/or its licensors do not warrant that this design will meet the specifications, will be suitable for your application or fit for any particular purpose, or will operate in an implementation. Texas Instruments and/or its licensors do not warrant that the design is production worthy. You should completely validate and test your design implementation to confirm the system functionality for your application.

Orderable: DRV81545EVM	Designed for: Public Release	Mod. Date: 9/9/2025
TID #: N/A	Project Title: DRV81545	
Number: MD107-001	Rev: A	Sheet Title: MSPM0G3507-Q1
SVN Rev: Not in version control	Assembly Variant: DRV81545PWP	Sheet: 2 of 5
Drawn By: Mojtaba Afshar	File: DRV81545_M0.SchDoc	Size: B
Engineer: Mojtaba Afshar	Contact: http://www.ti.com/support	



COD/INRUSH
 $0 \leq \text{RCOD} < 20\text{k}\Omega$: Disabled
 $60\text{k}\Omega \leq \text{RCOD} \leq 240\text{k}\Omega \rightarrow \text{tCOD (ms)} = \text{RCOD(k}\Omega)/120$

